

CONTENTS

APPLIANCE	2
GENERAL INDICATIONS/SAFETY REGULATIONS.....	3
GENERAL INFORMATION.....	4
MANUFACTURER.....	4
MACHINE	4
EU DECLARATION OF CONFORMITY FOR MACHINERY	4
SPECIFICATIONS.....	5
NOISE INFORMATION	6
TRANSPORT OF THE FRAME WITH A CRANE/ FORKLIFTTRUCK.....	7
TRANSPORT OF THE SLIDEWAY WITH CRANE OR FORKLIFTTRUCK.....	8
INSTALLING THE MACHINE/DUST EXTRACTION	9
INSTALLING THE MACHINE	9
DUST EXTRACTION.....	9
POSITIONING VERTICAL SLIDEWAY.....	10
RELEASE COUNTERWEIGHT	10
ADJUSTING THE FRAME	11
SLIDEWAY CANNOT BE LOCKED	11
CONNECTING TO THE ELECTRIC SUPPLY	12
380 V- 3 PHASE	12
DIRECTION OF SPINDLE ROTATION OF THE SAW-BLADE	13
PROPER DIRECTION IS ANTI-CLOCKWISE.....	13
WRONG DIRECTION IS CLOCKWISE	13
MANUAL	14
ADJUSTING THE MEASURE FOR VERTICAL CUTS.....	14
ADJUSTING THE MEASURE FOR HORIZONTAL CUTTING	15
ADJUSTING THE MEASURE FOR HORIZONTAL CUTTING ON THE MIDWAY FENCES.....	15
VERTICAL CUTTING	16
HORIZONTAL CUTTING.....	17
ADJUSTING THE RIVING KNIFE.....	18
FITTING THE SAW-BLADE.....	19
MAINTENANCE	20
CLEANING, LUBRICATING GREASING	20
40 PRODUCTIVE HOURS.	20
160 PRODUCTIVE HOURS:.....	20
1000 PRODUCTIVE HOURS.	20
CHECK BRUSHES ON HORIZONTAL TRACKS.....	21
SMOOTHENING WOODEN MIDWAY-FENCES.....	22
SMOOTHENING THE WOODEN SUPPORT.....	23
RE-ADJUSTING POINTERS FOR HORIZONTAL MEASURING FOR MIDWAY FENCES.....	24
RE-ADJUSTING POINTERS FOR HORIZONTAL MEASURING OF THE WOODEN SUPPORT.....	24
ADJUSTING MEASURE FOR VERTICAL CUTTING.....	25
MALFUNCTION.....	26
BRAKE DOES NOT OPERATE	26
SAW-BLADE DOES NOT ROTATE.....	26
SAW-BLADE BURNS IN MATERIAL	26
WIRE DIAGRAM.....	27
OVERALL DRAWING GIRAFFE.....	28
EXPLODED VIEW FRAME.....	29
EXPLODED VIEW SLIDEWAY.....	30
EXPLODED VIEW CARRIAGE.....	31
EXPLODED VIEW LENGTH STOP	32
EXPLODED VIEW SAFETY GUARD	33

APPLIANCE

The Giraffe vertical panel saws are only to be used for cutting wood and wood-like panels (e.g. chipboard, blockboard, MDF etc.)

Maximum panel sizes:

- Ü for type Giraffe 1250
3,2 * 1,25 * 0,055 meter
- Ü for type Giraffe 1550
3,2 * 1,55 * 0,055 meter
- Ü for type Giraffe 1850
4,2 * 1,85 * 0,055 meter
- Ü for type Giraffe 2100
4,2 * 2,1 * 0,055 meter
- Ü for type Giraffe 2200
5,2 * 2,2 * 0,055 meter

Cutting of other materials with the standard saw-blade is prohibited. Cutting other materials with a special saw-blade only with permission of manufacturer.

All other appliances except for the above are improper use of the machine and therefore prohibited. The producer cannot be held responsible for damage as a result of improper use. Damage will be recovered from the user.

The machine may not be operated, used or maintained by persons not acquainted with the risks of the machine.

Permission for operating, using and maintaining the machine have to be clearly described by a person or persons responsible within the organisation.

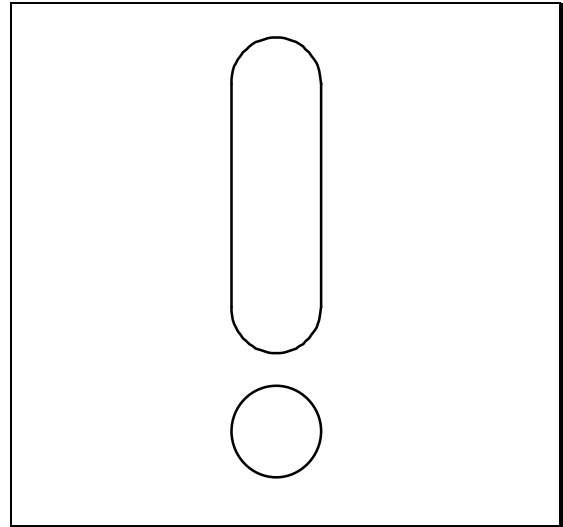
Maintenance has to be performed by the manufacturer or customer service.

One has to be acquainted and comply with the country's applicable safety regulations.

Only original Harwi parts are to be used.

We cannot give warranty or be held responsible for damage caused by using non-original Harwi parts.

The manufacturer cannot be held responsible for damage caused by changes made to the machine by the user.



REMAINING RISKS

If the machine is completely used according to all safety regulations there still will remain some risks:

- Ü Touching of the saw-blade with the sawing area.
- Ü Touching of the saw-blade when the lid is opened
- Ü Breaking of the saw-blade or parts of the saw-blade hurtling out of the guard.
- Ü Touching of parts under voltage while junction box or switch is opened.
- Ü Damage to the hearing by constant use of the machine without ear protection.
- Ü Throw out of harmful dusts or vapours by using a dust extractor with bad performance or no dust extractor at all.

GENERAL INDICATIONS/SAFETY REGULATIONS

Harwi machinefabriek Helmond B.V. has bestowed great care on compiling this manual. Before operating the machine read the complete manual carefully.

Person under the age of 18 are not allowed to work on or with circular sawing machines. Except for a training program on a legal basis.

The machine may only be operated by educated personnel or under supervision of educated personnel.

To avoid touching with rotating saw-blades make sure that:

Ü Clothing fits tightly to the body

Ü Work with closed fingers

Ü No rings or other jewellery are worn.

Ü A hairnet is used by long hair.

Be careful when changing the saw-blades.

They are sharp and cause injuries.

Do not remove woodchips when the saw-blade is running. Stop the machine first.

Broken saw-blades or blades or deformed blades are not to be used. Neither are HSS blades

The applied saw-blade is to be used and sharpened according to the directions of the manufacturer.

Sharpening only by competent craftsmen.

Stick to max. admissible r.p.m. mentioned on the blade. Preferably use noise-reduced saw-blades.

Flexible hoses of the dustextractor have to be from a highly inflammable quality (according to DIN 4102).

The safety guard and other safety equipment may not be removed or put out of order.

The pressure pad may not be clamped. The riving knife has to be used every time except for drop-in cuts. The riving knife has to be adjusted properly.

Assembling or repairs are only to be performed if the machine cannot be switched on. The switch or the main switch are to be switched off and locked with for instance a padlock.

Repairs to the electricity supply are only to be executed by skilled craftsmen.

When leaving the working area make sure that the machine cannot be switched on by incompetent persons. It is obligatory to wear dust-mask, ear protection and safety glasses.

Take care of a clean working area.

The machine has to be lighted. When using strip lighting take into account the stroboscopic effect. A rotating saw-blade seems to be standing still.

GENERAL INFORMATION

MANUFACTURER

HARWI Machinefabriek B.V.
Lage Dijk 28
5705 BZ Helmond, the Netherlands
Tel: 00 31 492-54 33 55
Fax: 00 31 492-52 23 05

MACHINE

Vertical panel saw GIRAFFE
Type:.....
Machinenummer:.....
Manufactured:.....

EU DECLARATION OF CONFORMITY FOR MACHINERY

(according to Annex II A of the Machinery Directive)

We HARWI Machinefabriek B.V. Lage Dijk 28, 5705 BZ Helmond, the Netherlands herewith declare, on our own responsibility, that the product:

HARWI VERTICAL PANEL SAW TYPE GIRAFFE..... , MACHINENUMBER.....,

which this declaration refers to, is in conformity with the following standards;

Machinery Directive 89/392/EEG, 91/368/EEG, 93/44/EEG and 93/68/EEG,
taking into consideration prEN 1870-2.

R. Visser
Man. Dir

SPECIFICATIONS

MEASURES AND WEIGHTS

Type Giraffe		1250	1550	1850	2100	2200
Length of cut	mm	2500	3200	4200	4200	5200
Height of cut	mm	1250	1550	1850	2100	2200
Depth of cut	mm	55	50	50	50	50
Speed saw-blade	rpm	2800	5000	5000	5000	5000
Diam. saw-blade		250	250	250	250	250
Motorpower	kW	2,2	2,2	2,2	2,2	2,2
	hp	3	3	3	3	3
Voltage	V	380	380	380	380	380
Frame dimensions						
Length	mm	3350	4100	5100	5100	6100
Depth	mm	960	1050	1150	1250	1250
Height	mm	2100	2400	2700	2950	3050
Weight	kg	390	485	570	610	715

Used saw-blades have to be conform to prEN 847-1.
Maximum thickness of saw-blade 3.6 mm.

Dust emission on work spot considerably under TRK value of 2 mg/m³ (with integrated dust extracting system).

NOISE INFORMATION

Used saw-blade :AKE Sounstar ø250 z=80

A-weighted Equivalent Continuous Noise pressure

Idle dB(A) :70

Loaded dB(A) :89.5

Noise pressure on the workspot

Idle db(A) :58.9

Loaded db(A) :79

Measuring performed according to DIN 45635 part 1659. Measured when cutting chipboard thickness 18 mm, length 2 meter.

Safe deviation can be approx. 3 db(A).

The above mentioned values are radiated noise pressures and not necessarily noise pressures to work safely with this machine. Supplementary measures for ear protection can be necessary. The following can be of influence:

Ü duration of operations

Ü working area

Ü other noises

Maximum value may vary per country. Above information can be used for better valuation of dangers and risks subsequent to using this machine.

TRANSPORT OF FRAME WITH A CRANE/ FORKLIFTTRUCK

THE FRAME MAY ONLY BE LIFTED WITH THE SPECIAL SLINGS.

RECOMMENDED CARRYING CAPACITY OF CRANE OR FORKLIFTTRUCK:.....1000 KG.

The machine has to be lifted with the special slings delivered with the frame (Figures 2 and 3).

The frame may only be loosened from the slings if it is stable on the floor. Secure the machine to the ground with the delivered clamps in such a way that adjusting the machine remains possible.

The machine may only be installed by skilled craftsmen.

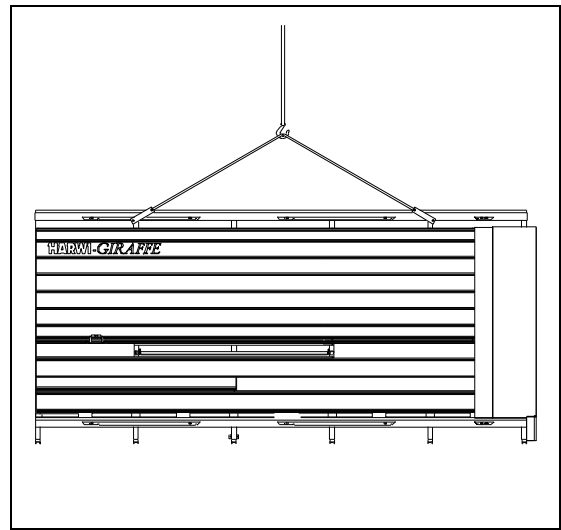


Figure 2

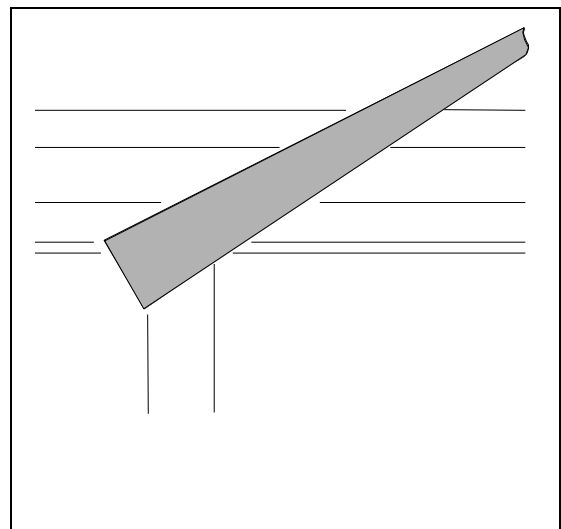


Figure 3

TRANSPORT SLIDEWAY WITH CRANE/FORKLIFTTRUCK

THE SLIDEWAY MAY ONLY BE LIFTED ON THE SPECIAL CASK GRIP.

RECOMMENDED CARRYING CAPACITY OF CRANE OR FORKLIFTTRUCK:.....1000 KG.

The slideway may only be lifted with the special cask grip on the topside of the vertical slideway.(Figures 4 and 5).

The vertical slideway can only be placed on the frame after securing the machine to a flat and solid floor.

The slideway may only be placed on the frame by skilled craftsmen.

(See also chapter: Positioning vertical slideway).

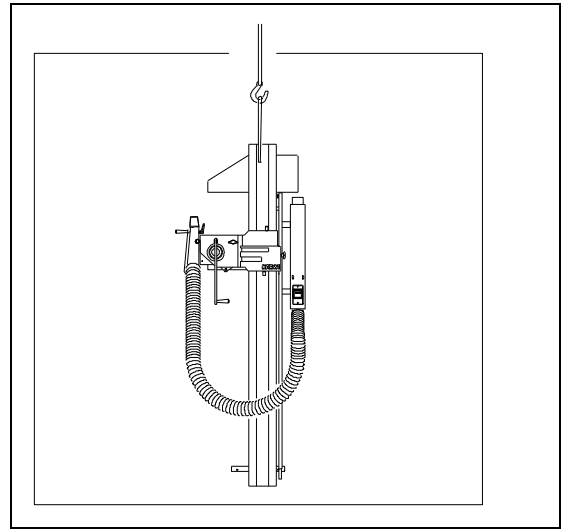


Figure 4

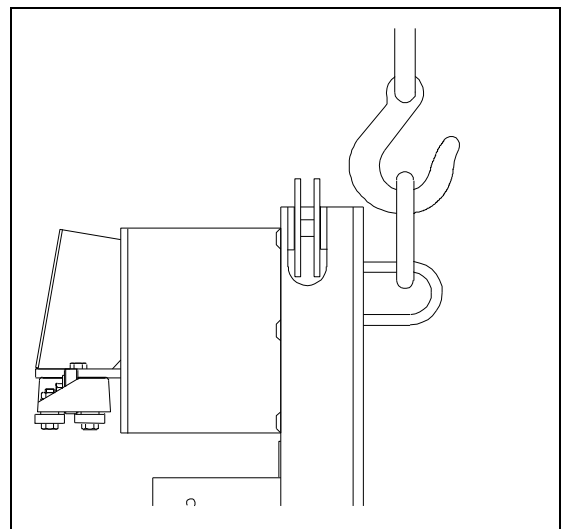


Figure 5

INSTALLING THE MACHINE/DUST EXTRACTION

INSTALLING THE MACHINE

- 0 Adjust the machine on a flat and solid floor. Before using the machine it has to be connected to a dust extraction.
- 1 Place the vertical supports in one line.
- 2 Turn adjusting bolts anti-clockwise.
- 3 Insert the adjusting plates in the profiles. (Figure 6).
- 4 Fasten the bolts hand-tight.

DUST EXTRACTION

- 0 The machine has to be connected to a dust extractor. Diameter of connection is 100 or 160 mm.
- 1 The dust extractor has to be connected in such a way that motor and dust extractor are switched on simultaneously.
- 2 The extracting capacity has to be calculated in such a way that a minimum air speed of 20m/s is reached at the connection on the machine.
- 3 The air speed V is 1450 m^3 at $V_{\text{air}} = 20 \text{ m/s}$ at a depression of about 1800 Pa.

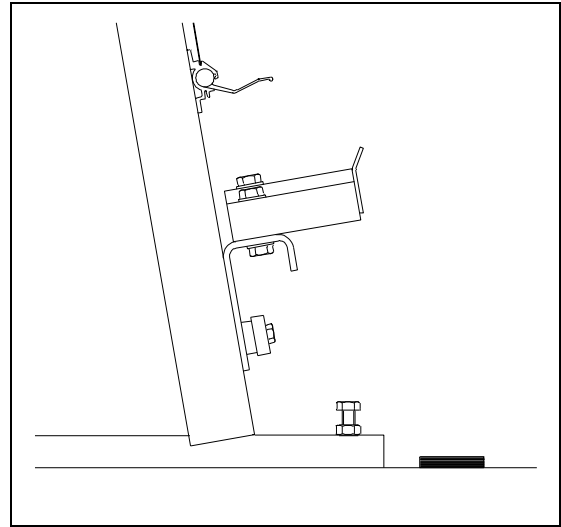


Figure 6

POSITIONING VERTICAL SLIDEWAY

- 0 Be a wear of the centre of gravity when removing the slideway from the crate or its supports. Use the cask grip on the top when lifting the slideway. (see TRANSPORT OF THE SLIDEWAY WITH CRANE/FORKLIFTRUCK; Figures 4 and 5)
- 1 Dismantle bearing support on bottom side of slideway by removing two bolts. (Figure 7)
- 2 Adjust the two bearings of the slideway carriage max. backwards.
- 3 Place slideway on the frame.

Notice: At the back side of the slideway is a T-profile. This has to be lifted over the tracks (Figure 8)

- 4 Adjust the bearings of the carriage at the top side of the slideway.
- 5 Assemble bearing support on bottom side of the slideway.
- 6 Push the bearing support tightly against the adjusting bolts at the front side.
- 7 Fasten the bearings support with 2 M10 bolts.

RELEASE COUNTERWEIGHT

- 1 Remove the protruding bolt at the bottom side of the track (Figure 9).
- 2 Insert and tighten the short bolt, stuck on the grip of the depth adjustment.

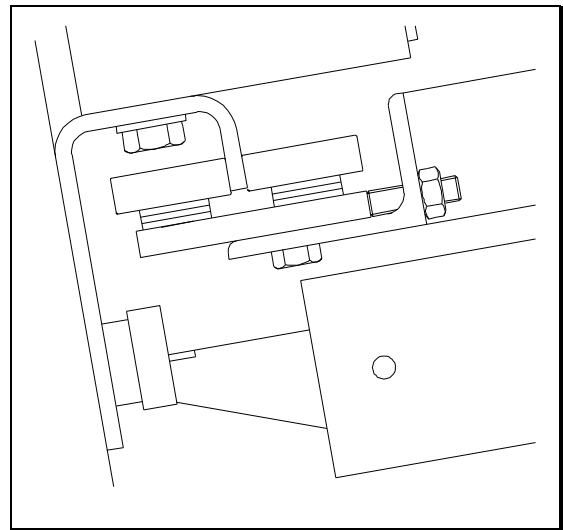


Figure 7

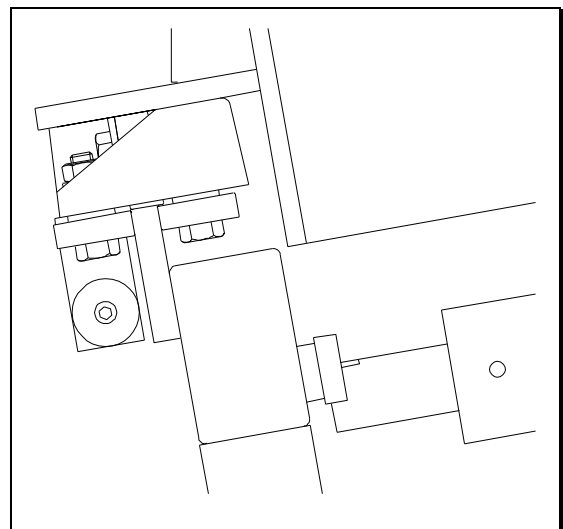


Figure 8

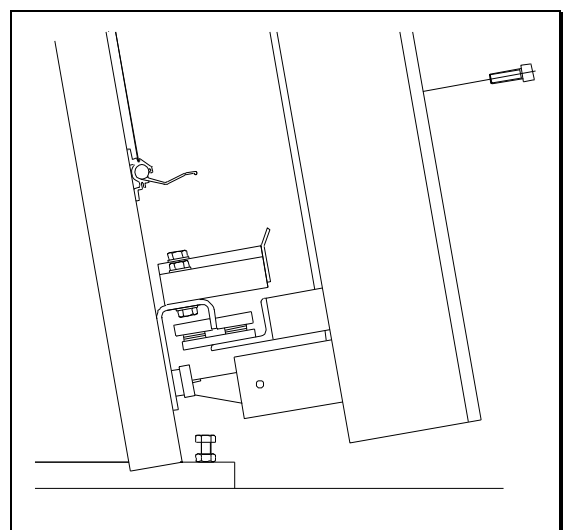


Figure 9

ADJUSTING THE FRAME

- 0 Place the vertical slideway in the middle of the frame.
- 1 Check if the slideway can be locked easily in both top and bottom notches (Figure 10).

SLIDEWAY CANNOT BE LOCKED

- 2 Place the upper locking strip right in front of the notch (Figure 11).

Example:

The bottom locking strip is at the left of the notch.

Solution:

Screw the adjusting bolt of the vertical support in (clockwise) at the **right** bottom side of the slideway (the frame is lifted).

Example:

The bottom locking strip is at the right of the notch.

Solution:

Screw the adjusting bolt of the vertical support in (clockwise) at the **left** bottom side of the slideway (the frame is lifted).

- 3 Repeat this procedure at every sawing position of the frame until the slideway can be locked easily in both top and bottom notches.

Notice: If the frame cannot be lifted by means of the adjusting bolts, check if the clamps are secured too tight (Figure 12).

Release the clamps a bit and try again.

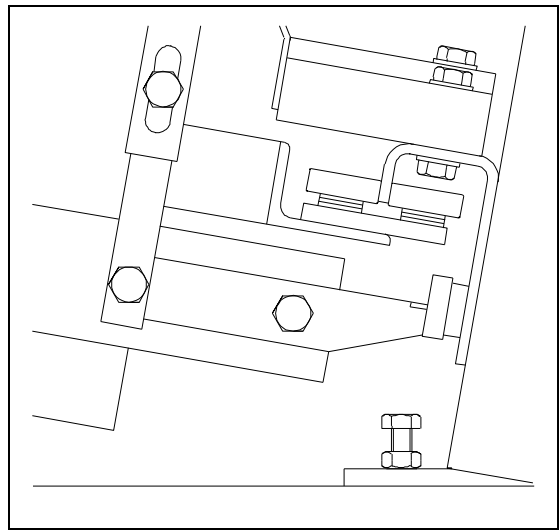


Figure 10

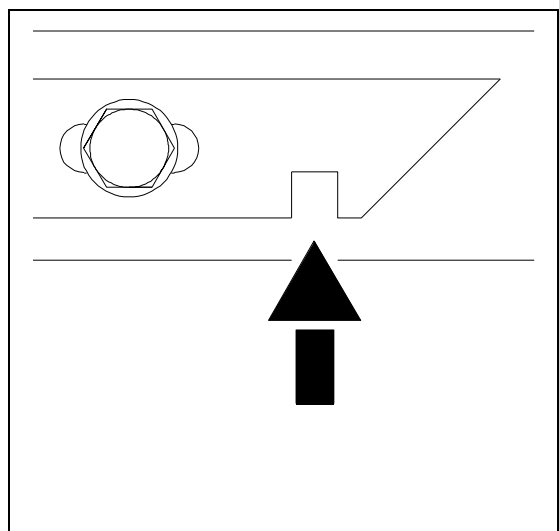


Figure 11

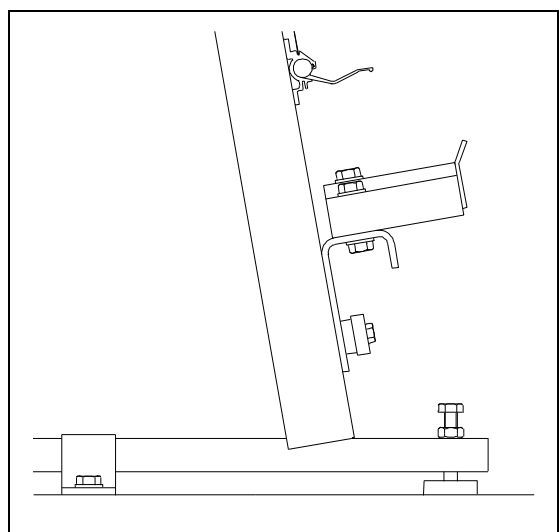


Figure 12

CONNECTING TO THE ELECTRIC SUPPLY

380 V- 3 PHASE

- 0 Connecting the machine may only be done by a skilled craftsman.
- 1 Insert cable with four supply leads with a diameter of 1.5 mm² through the swivel into the junction box at the back side of the frame. The quality of the cable has to be minimal equal to H 07 RN F.
- 2 The cable has to be connected to the electric fitting (Figure 13):

Ü the 3 phases (L1, L2, L3)

.....black or brown

Ü the earth (PE).....yellow /green

- 3 Close the junction box carefully.
- 4 Check if the machine is provided with minimal fuses 16 Amp. slow.

Notice: Check the rotation of the main saw-blade *

- * The direction of rotation is indicated on the lid and is anti-clockwise. If the direction is wrong, interchange two of three phases. (See first next page SPINDLE ROTATION).

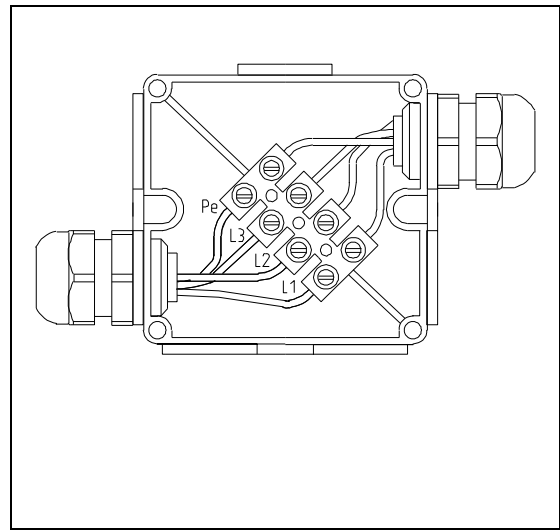


Figure 13

DIRECTION OF SPINDLE ROTATION OF THE SAW-BLADE

- 0 Block the carriage and put the saw-blade in vertical position.
The direction of rotation is indicated on the lid. (Figure 14).

PROPER DIRECTION IS ANTI-CLOCKWISE

(standing at the left side of the casting)

- 1 Switch motor on and off.
- 2 Check if direction is anti clockwise.

WRONG DIRECTION IS CLOCKWISE

(standing at the left side of the casting)

- 1 Switch motor on and off.
- 2 Direction is clockwise.
- 3 Disconnect mains supply.
- 4 Interchange any two supply leads in the junction box (at the back side of the frame).
- 5 Close junction box carefully.
- 6 Connect the mains supply.

Notice: If the saw-blade was turning to the wrong side the saw-blade may come loose. Check this before operating the machine. (see chapter: CHANGING THE SAW-BLADE).

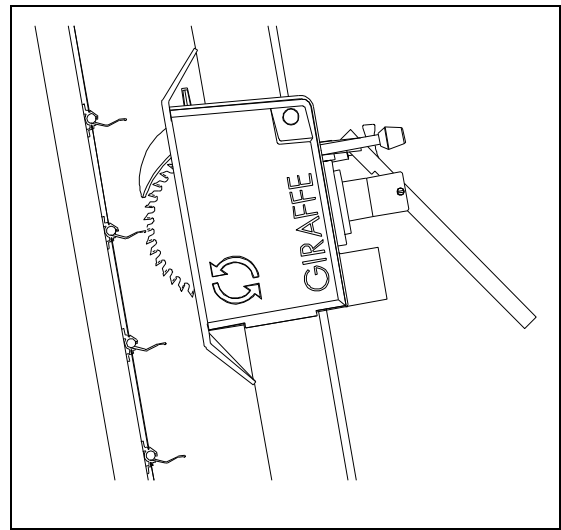


Figure 14

ADJUSTING THE MEASURE FOR VERTICAL CUTS

- 1 Lock the slideway at the zero point of the measure scale.
- 2 Move saw unit upwards.
- 3 Place length stop at the left or at the right side of the zero point.
- 4 Adjust measure and swing the stop forwards. Stop clamps automatically (Figure 15).
- 5 If the measure to be adjusted is bigger than 1000 mm move the slideway one position to the left.

EXAMPLE:

Width of cut has to be 23 cm.
Adjust measure at 23 cm.
Place the material against the aluminium stop of the length stop.
Lock the slide way at the zero point of the measure scale.

EXAMPLE:

Width of cut has to be 123 cm.
Adjust measure at 123 cm.
Place the material against the aluminium stop of the length stop.
Lock the slideway at the zero point of the measure scale
OR
Adjust measure at 23 cm.
Place the material against the aluminium stop of the length stop.
Lock the slideway one position to the left of the zero point (if the stop was place at the right side of the zero point).

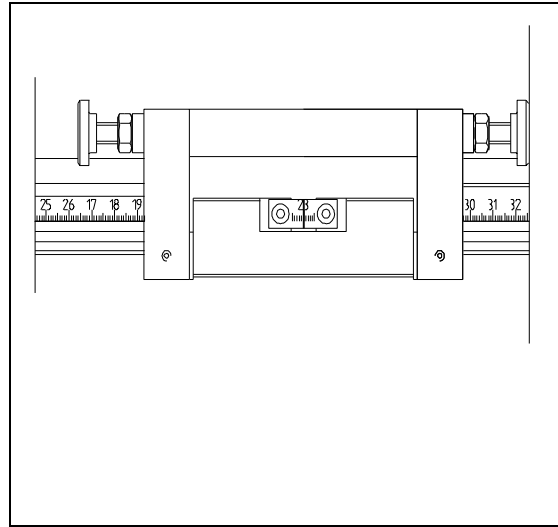


Figure 15

ADJUSTING THE MEASURE FOR HORIZONTAL CUTTING

- 0 The zero of the measure scale on the slideway corresponds to the upper side of the wooden support.
- 1 Put the saw-blade in horizontal position (see chapter HORIZONTAL CUTTING).
- 2 Set the correct height by means of the scale on the slideway (Figure 16).
- 3 Fasten the knob at the right side of the motor carriage.
- 4 Unlock the slideway.

Notice: Always cut from left to right.

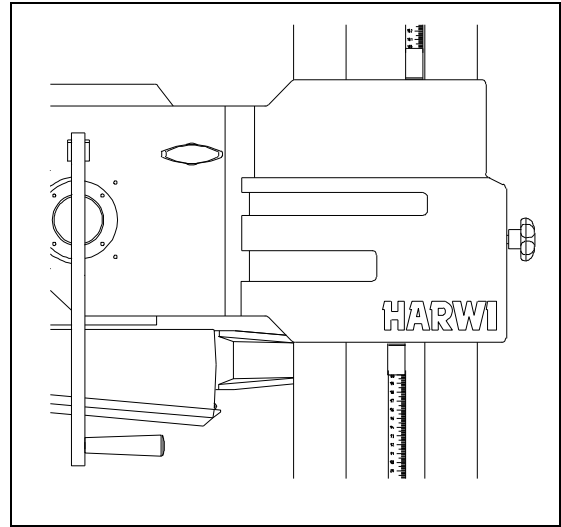


Figure 16

ADJUSTING THE MEASURE FOR HORIZONTAL CUTTING ON THE MIDWAY FENCES

- 0 The zero of the measure scale corresponds to the upper side of the midway fence.
- 1 Put the saw-blade in horizontal position (see chapter HORIZONTAL CUTTING).
- 2 Set the correct height by means of the scale on the slideway (Figure 16).
- 3 Fasten the knob at the right side of the motor carriage.
- 4 Unlock the slideway.

Notice: Always cut from left to right.

VERTICAL CUTTING

- 0 Always cut from top to bottom.
- 1 Position the motor carriage at the top of the slideway.
- 2 Adjust measure and position the material against the aluminium stop of the length-stop.
- 3 Take the handle of the depth adjustment.

Notice: The knob at the upper side of motor carriage has to be loosened.

- 4 Push saw unit forward.
- 5 Switch on motor.
- 6 Pull the saw-blade steadily down through the material (Figure 17).
Meanwhile turn the handle anti-clockwise.
- 7 When the plate is cut, pull the saw-blade out of the material by means of the handle.
- 8 Switch off motor.
- 9 Swing stop of length stop upwards.
- 10 Remove material.

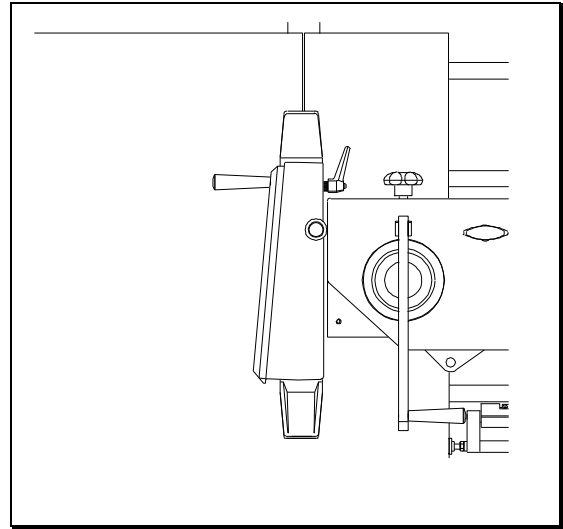


Figure 17

HORIZONTAL CUTTING

- 0 Always cut from left to right.
- 1 Lock motor carriage at breast height with the knob at the right side of the carriage.
- 2 Pull saw unit back with handle and hold.
- 3 Left hand on grip of safety guard. Pull back blocking pin with your right hand and turn saw unit. (Figure 18).
- 4 Insert blocking pin when the saw unit is in its horizontal position.
- 5 Adjust saw unit at the correct height.
- 6 Block carriage with knob at the right side.
- 7 Put a panel on the machine.
- 8 Swing stop of length stop downwards against the panel.
- 9 Place material against the aluminium stop of the length stop.
- 10 Push saw unit forwards.

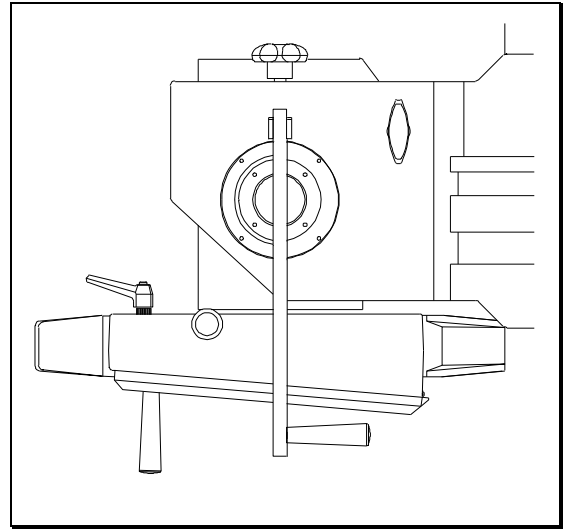


Figure 18

Notice: Damage to the aluminium back support strips can be prevented by pivoting them out of the way, when cutting at the same height as the support strips.

- 11 Switch on motor.
- 12 Cut the material steadily from left to right.
- 13 Pull the saw unit out of the material.
- 14 Switch off motor.

Notice : See to it that the riving knife is adjusted properly.

ADJUSTING THE RIVING KNIFE

- 1 The riving knife has to be adjusted in such a way that the distance between riving knife and teeth of the saw-blade is between 3 and 8 mm.
- 2 During cutting the riving knife has to be in the most forward position (Figure 19). Only for drop-in cuts the riving knife can be pulled back. Put the riving knife back in most forward position afterwards.

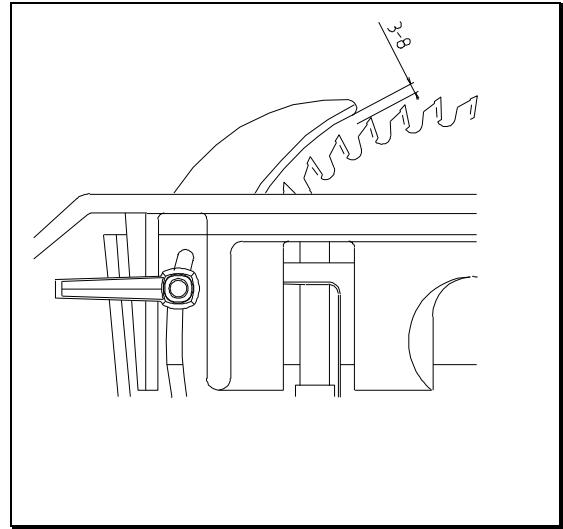


Figure 19

FITTING THE SAW-BLADE

- 1 Disconnect mains supply.
- 2 Open the lid of the saw unit.
- 3 Insert the delivered 8 mm allen key in the saw spindle.
- 4 Loosen nut with flat key SW 30 (Figure 20).
- 5 Remove front flange.
- 6 Remove saw-blade.
- 7 Check if front and back flange are clean.
- 8 Put the new saw-blade on the spindle. **See to direction of rotation.**
- 9 Put flange and nut back again

Notice: A key is fitted in the spindle to prevent turning of the flange.

Check presence of key and see to it that the flange is pushed over properly.

- 10 Check the position of the riving knife.
- 11 Close lid of the safety guard.
- 12 Connect mains supply.

Notice: Speed has to be mentioned on the saw-blade; Min. rpm N = 3000.

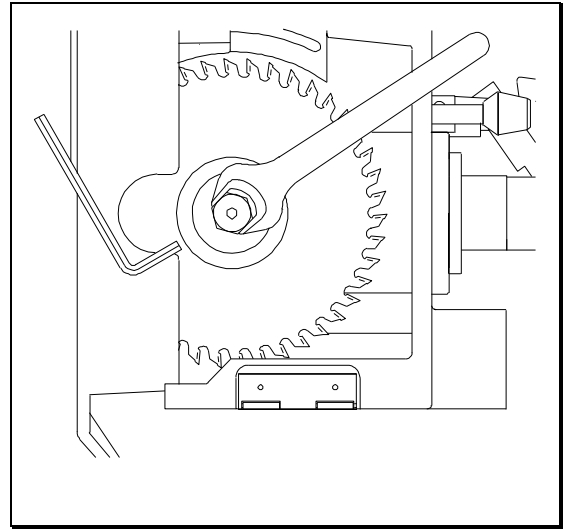


Figure 20

MAINTENANCE

CLEANING, LUBRICATING GREASING

Clean machine especially work areas and aluminium strips frequently.

Perform following maintenance every 40 PRODUCTIVE HOURS.

- 1 Clean tracks at the lower and upper side of the frame.
- 2 Clean bearings at the down and upper side of the slideway.
- 3 Clean tracks of the slideway and clean bearings of the carriage.
- 4 Clean guiding spindles of pressure pad.
- 5 Brush the air inlet of the motor and check if it is not obstructed.
- 6 Clean spindle of depth adjustment and lubricate slightly.
- 7 Check dust extraction.

Check the following every 160 PRODUCTIVE HOURS:

- 8 Wear and tear of cables.
- 9 Broken or torn parts of the electric circuit.
- 10 Brake time of saw-blade. (= less than 10 seconds).
- 11 Operation of the safety switch in the safety guard.
- 12 Operation and wear and tear of the pressure pad.

Have the machine checked and adjusted every 1000 PRODUCTIVE HOURS by supplier of manufacturer.

MAINTENANCE

CHECK BRUSHES ON HORIZONTAL TRACKS

The brushes are fitted tot the carriage with tape (Figure 21).

If the brushes are worn out fit new ones. It prevents dirt deposit on the bearings and ruggedly running of the slideway when cutting horizontally.

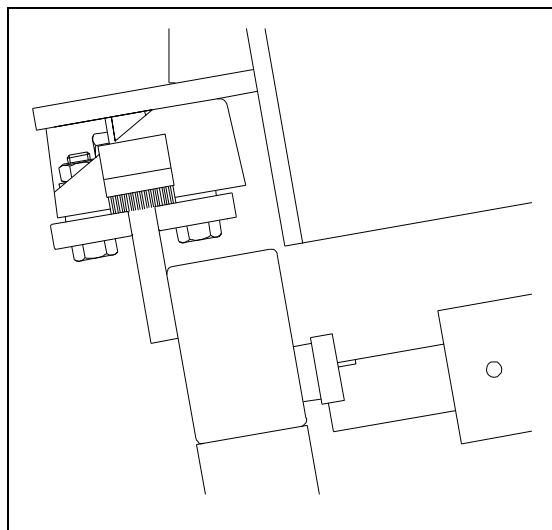


Figure 21

MAINTENANCE

SMOOTHENING WOODEN MIDWAY-FENCES

Notice: See to it that the frame is adjusted properly before smoothening wooden midway-fences.

Notice: Always smoothen all midway fences at the same time.

Notice: The midway fences have to be clamped so they cannot fold away while smoothening. See to it that the saw-blade cannot touch the clamps.

- 1 Pull back the riving knife (the same way as with drop in cuts).
- 2 Position slideway at the left side of the frame.
- 3 Put saw unit in horizontal position.
- 4 Position the saw-blade at the same height as midway fences (Figure 22).
- 5 Lock carriage with knob at the right side.
- 6 Check depth of cut
- 7 Lock the depth off cut setting with the knob at the top side of the carriage.
- 8 Switch on motor.
- 9 Cut from left to right.

Notice: Move the slideway slowly and with a constant speed from left to right.

- 10 Check if the complete supports have been smoothened.
- 11 If not, position slideway again at the left of the frame, adjust the carriage a little lower and cut again.
- 12 Put riving knife back in 0-position.
- 13 Remove clamps.
- 14 After cutting adjust arrow for the horizontal measure.
(see chapter RE-ADJUSTING THE POINTERS).

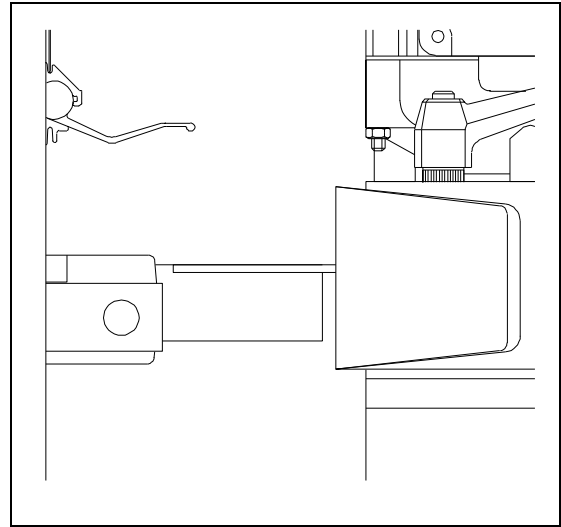


Figure 22

MAINTENANCE

SMOOTHENING THE WOODEN SUPPORT

Notice: See to it that the frame is adjusted properly before smoothening wooden midway-fences.

- 1 Remove the wooden blocks at the front of the wooden support.
- 2 Position slideway at the left side of the frame.
- 3 Put saw unit in horizontal position.
- 4 Position the saw-blade at the same height as wooden support.(Figure 23).
- 5 Lock carriage with knob at the right side.
- 6 Pull back riving knife (the same way as with drop-in cuts).
- 7 Check depth of cut.
- 8 Lock the depth of cut setting with the knob on top of the carriage.
- 9 Switch on motor.
- 10 Cut from left to right.

Notice: Move the slideway slowly and with a constant speed from left to right.

- 11 Check if the complete support has been smoothened.
- 12 If not, position slideway again at the left side of the frame, adjust the carriage a little lower and cut again.
- 13 Put back the wooden blocks.
- 14 After cutting adjust arrows for the horizontal measure.
(see chapter RE-ADJUSTING THE POINTERS).

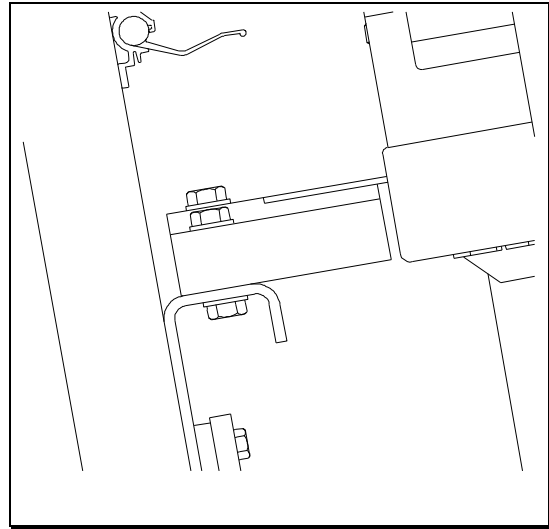


Figure 23

MAINTENANCE

RE-ADJUSTING POINTERS FOR HORIZONTAL MEASURING FOR MIDWAY FENCES.

- 0 The pointer has to be re-adjusted after smoothening the midway fences.
- 1 Put saw unit in horizontal position.
- 2 Position the saw-blade on the wooden midway fence, in such a way that it just touches the surface.
- 3 Lock the motor carriage.
- 4 Adjust pointer of the measure scale of the midway fence at the right side of the carriage at 0 (Figure 24).

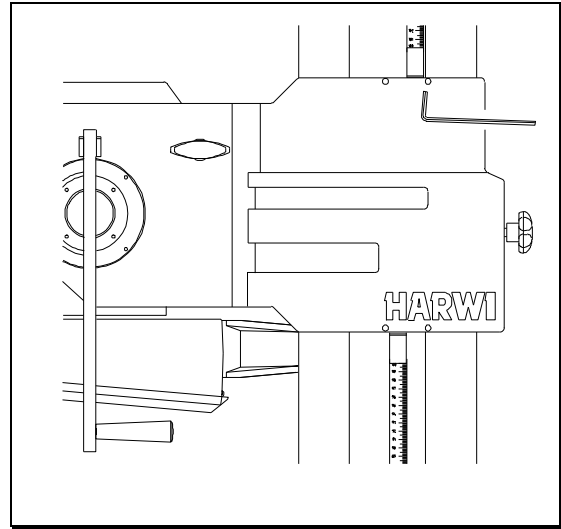


Figure 24

RE-ADJUSTING POINTERS FOR HORIZONTAL MEASURING OF THE WOODEN SUPPORT

- 0 The pointer has to be re-adjusted after smoothening the wooden support.
- 1 Put saw unit in horizontal position.
- 2 Position the saw-blade on the wooden support, in such a way that it just touches the surface.
- 3 Lock carriage.
- 4 Adjust pointer of the measure scale of the wooden support at the right side of the carriage at 0.
- 5 Move the carriage upwards and adjust at 100.
- 6 Position pointer of measure scale of the wooden support at the bottom side of the carriage at 0.

MAINTENANCE

ADJUSTING MEASURE FOR VERTICAL CUTTING

- 1 Position length stop in the profile of the upper scale at the left side of the saw unit.
- 2 Lock the saw unit in the zero position.
- 3 Put a reference gauge (a strip with an exact width) on the machine with the right side against the saw-blade.
- 4 Push the stop against the left side of the reference gauge and read measure (Figure 25).
- 5 Loosen the lock nut at the aluminium cap and turn in or out until the exact measure is adjusted.
- 6 Block the aluminium cap with the lock nut.

Position length stop in the aluminium profile of the measure scale at the left lower side of the frame.

- 7 Position the stop against the reference gauge which was put against the saw-blade.
- 8 Check the measure.
- 9 Measure deviation can now be corrected by moving the aluminium profile.
- 10 Remove the metal back panel above the profile and loosen the 6 screws a little. (Figure 26).
- 11 Adjust the profile left or right.
- 12 Adjust measure, fasten screws and put back the metal back panel.

The left aluminium stop of the length stop can be adjusted the same way.

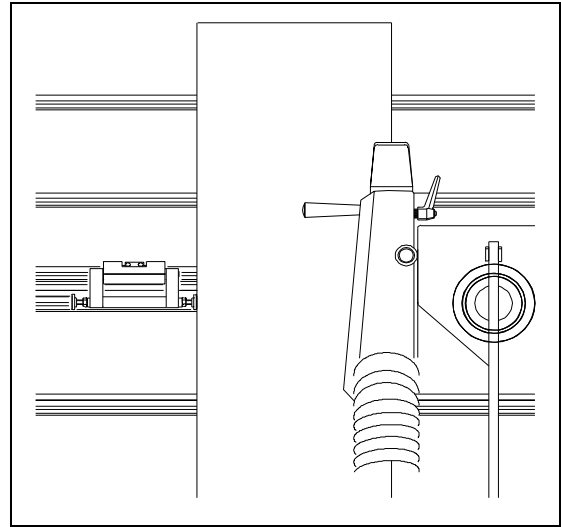


Figure 25

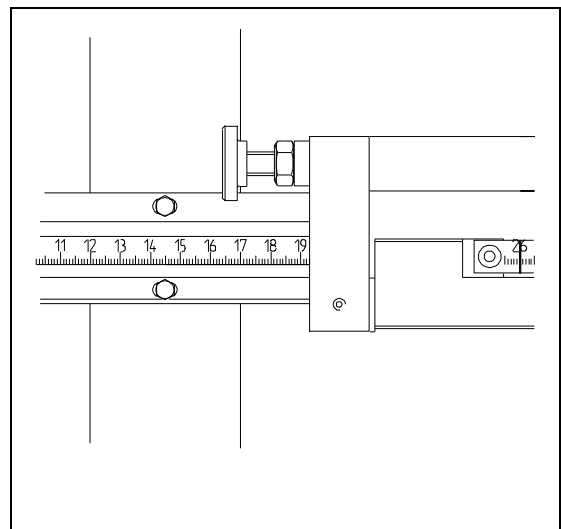


Figure 26

MALFUNCTION

SECURITY

Disconnect the machine of the mains supply, before adjusting the machine or removing malfunctions.

See to it that all damaged parts are replaced before operating the machine.

MALFUNCTION

BRAKE DOES NOT OPERATE

- 1 Switch off machine with main switch and contact an electrical fitter.

MALFUNCTION

SAW-BLADE DOES NOT ROTATE

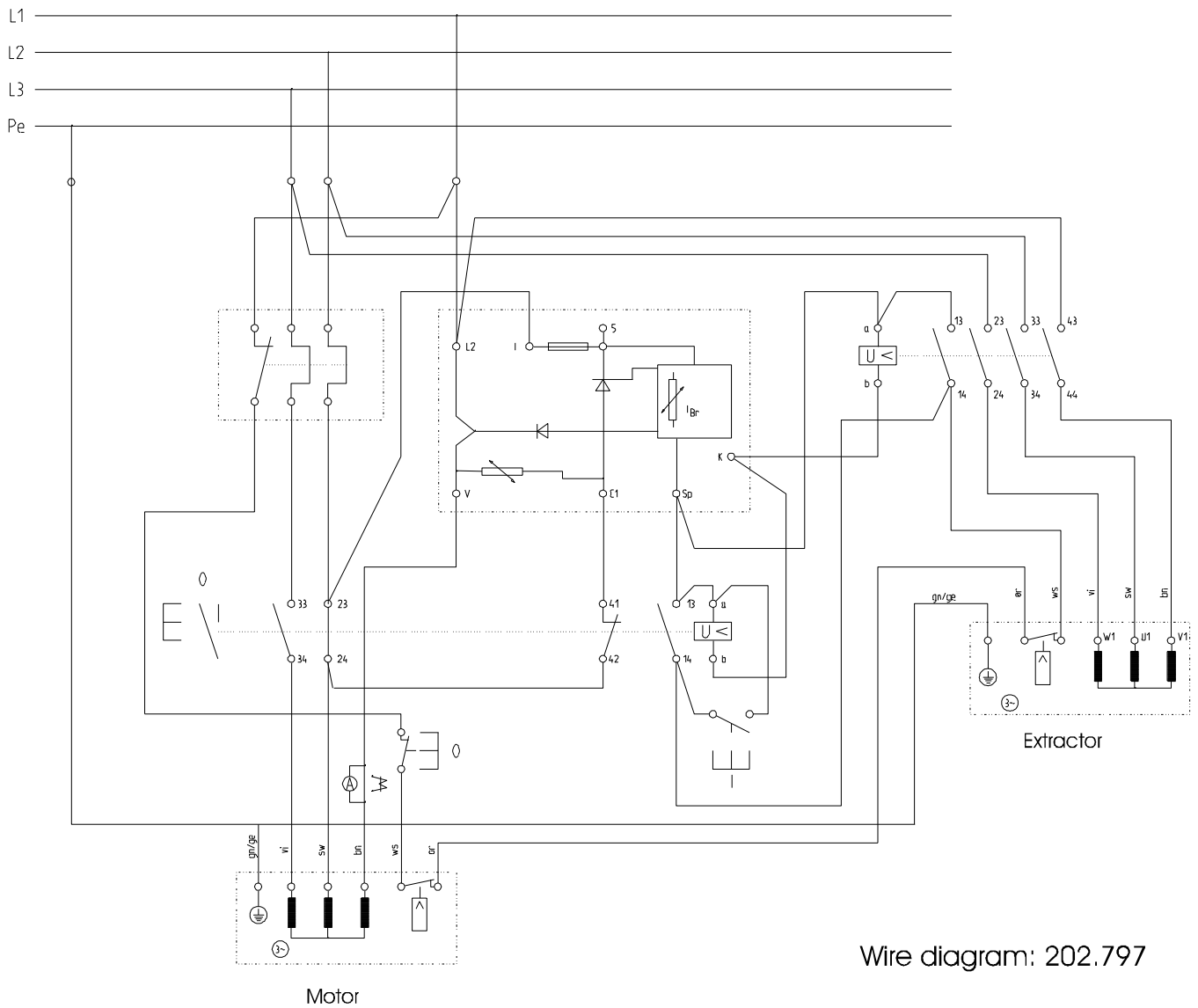
- 1 Disconnect the machine of the mains supply.
- 2 Check if the saw-blade runs freely.
- 3 Check if the saw-blade is fitted properly (see chapter FITTING OF THE SAW-BLADE).
- 4 Check if the lid of the safety guard can be closed properly and if the safety switch is operated.
- 5 If everything is checked without any result contact an electrician or your supplier.

MALFUNCTION

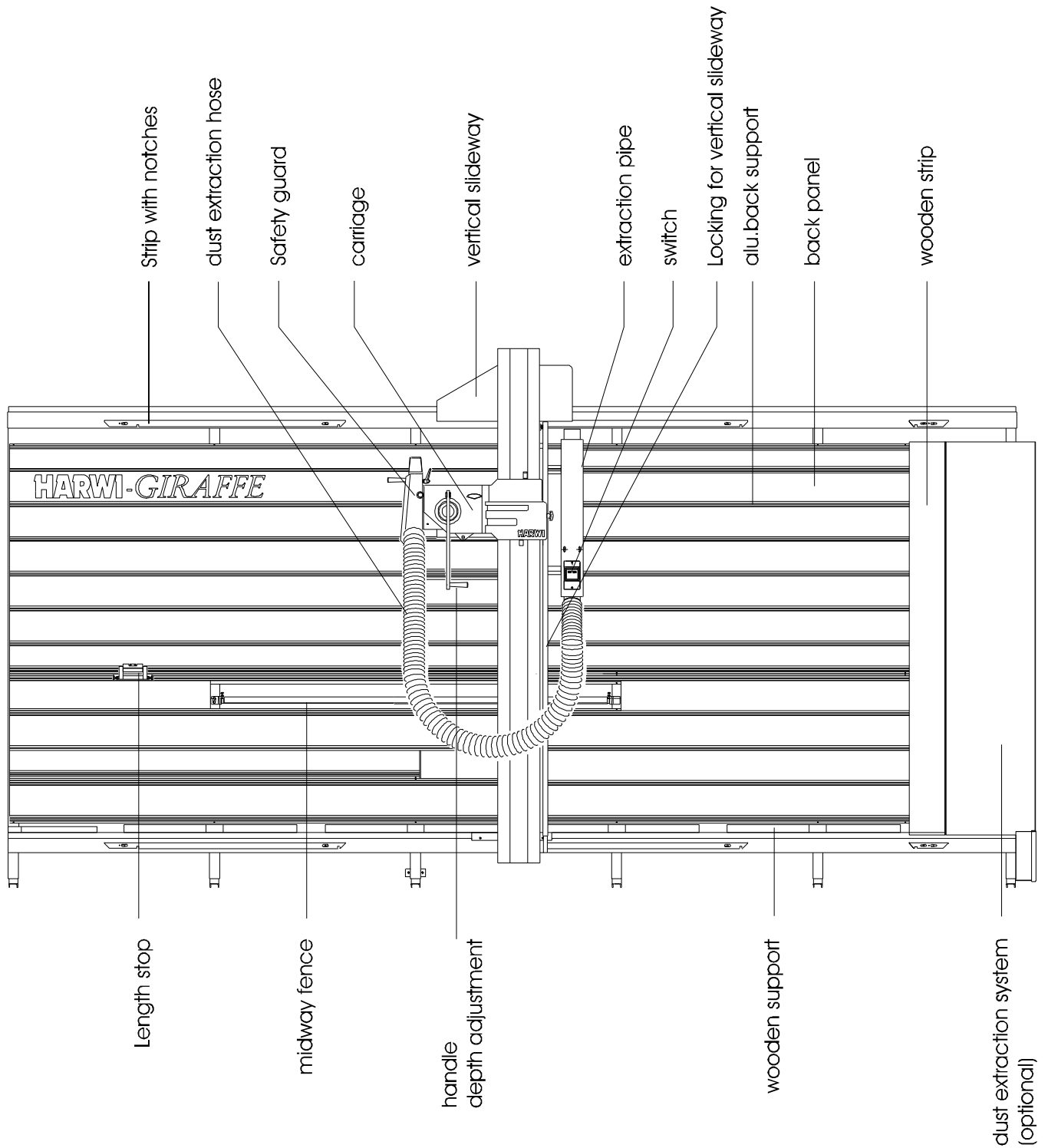
SAW-BLADE BURNS IN MATERIAL

- 1 Check direction of rotation of the saw-blade (see chapter DIRECTION OF SPINDLE ROTATION OF THE SAW-BLADE).
- 2 Check if the saw-blade is fitted anti-clockwise.
- 3 Check if the saw-blade is suitable for spindle speed and kind of material.
- 4 Check if the saw-blade needs sharpening.
- 5 Check if the machine is adjusted properly and if the slideway is blocked when cutting vertically.
- 6 Check if the carriage is blocked when cutting horizontally
- 7 Check if blocking pin for horizontal/vertical cutting is properly in its place.

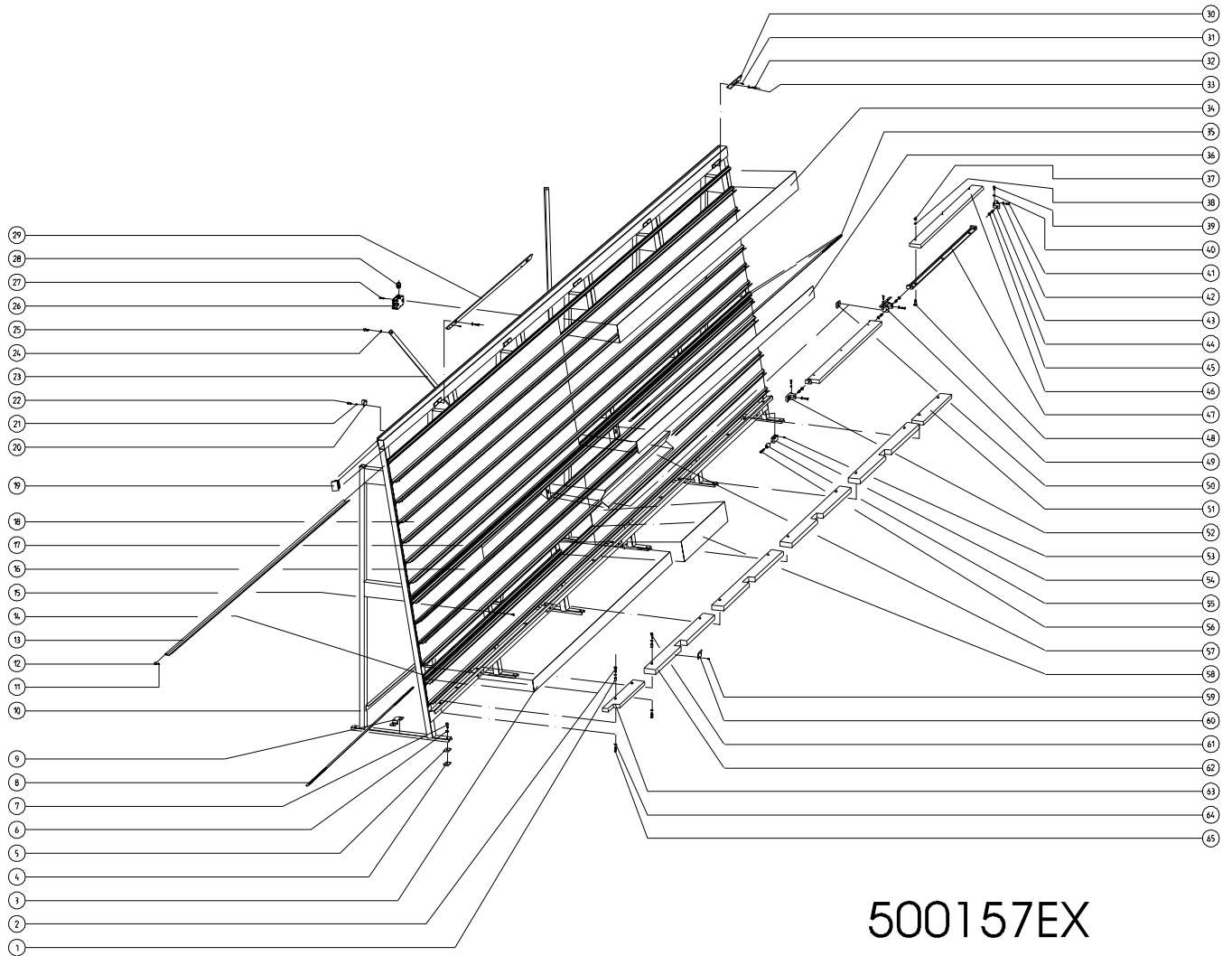
WIRE DIAGRAM



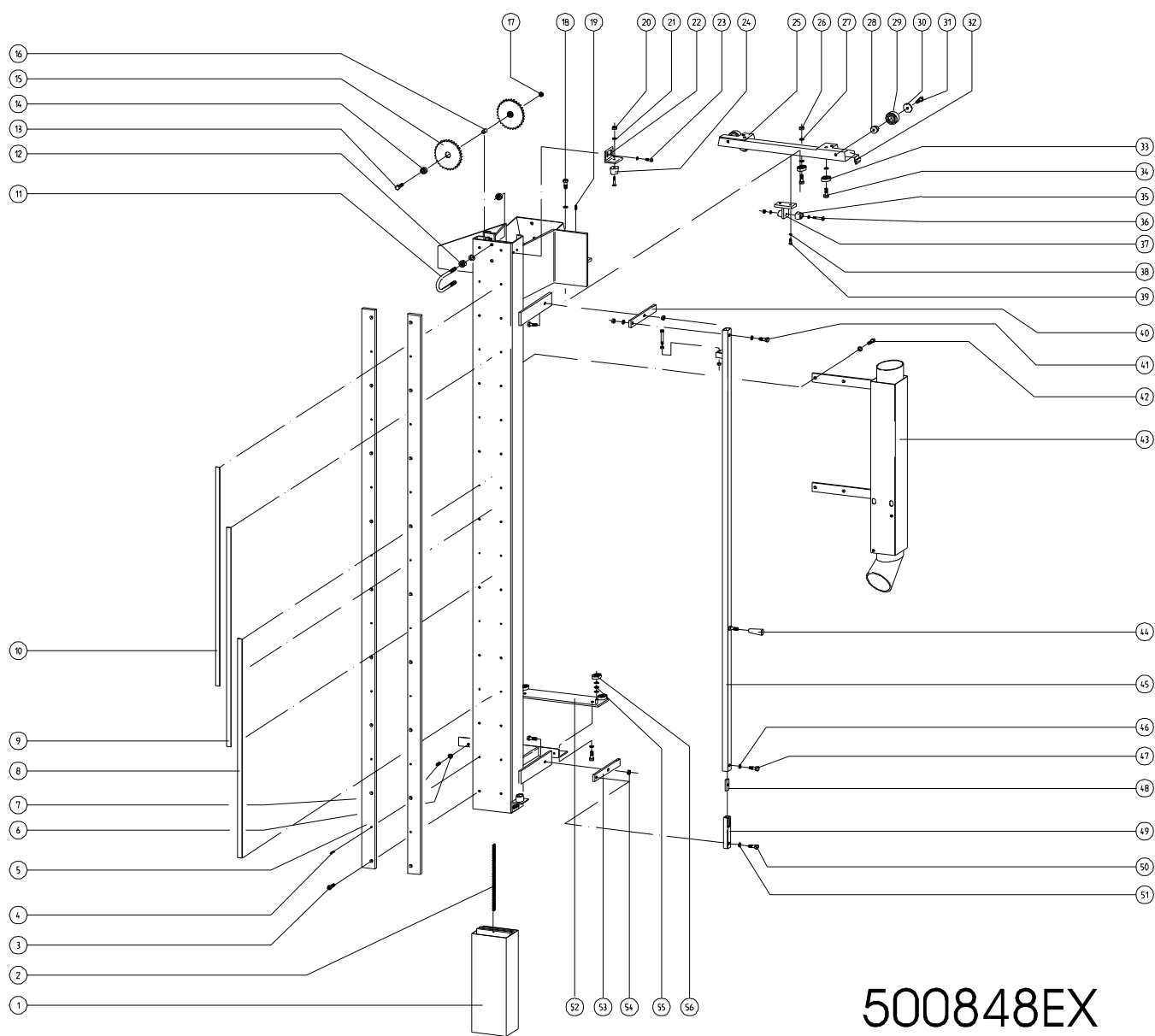
OVERALL DRAWING GIRAFFE



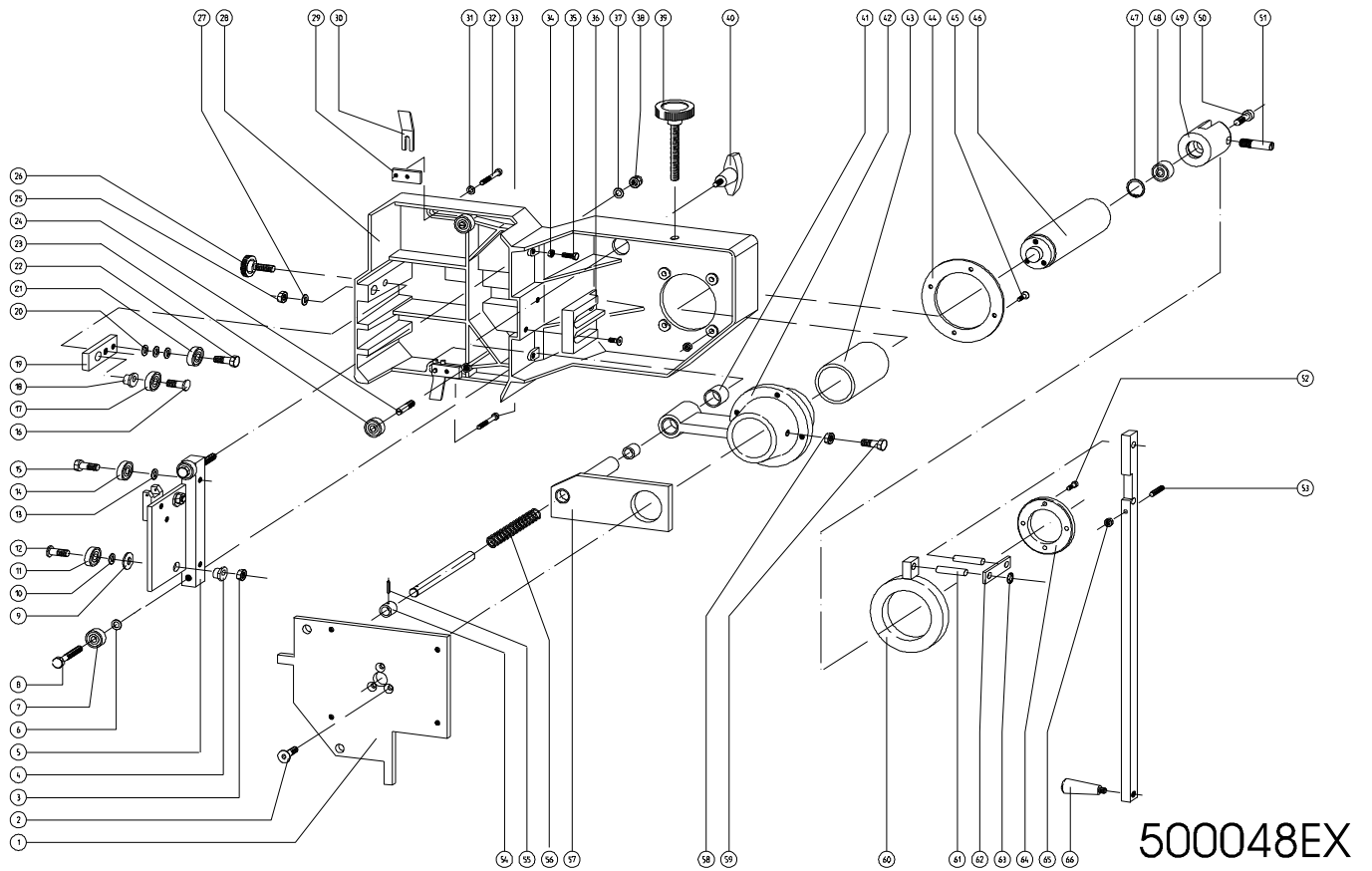
EXPLODED VIEW FRAME



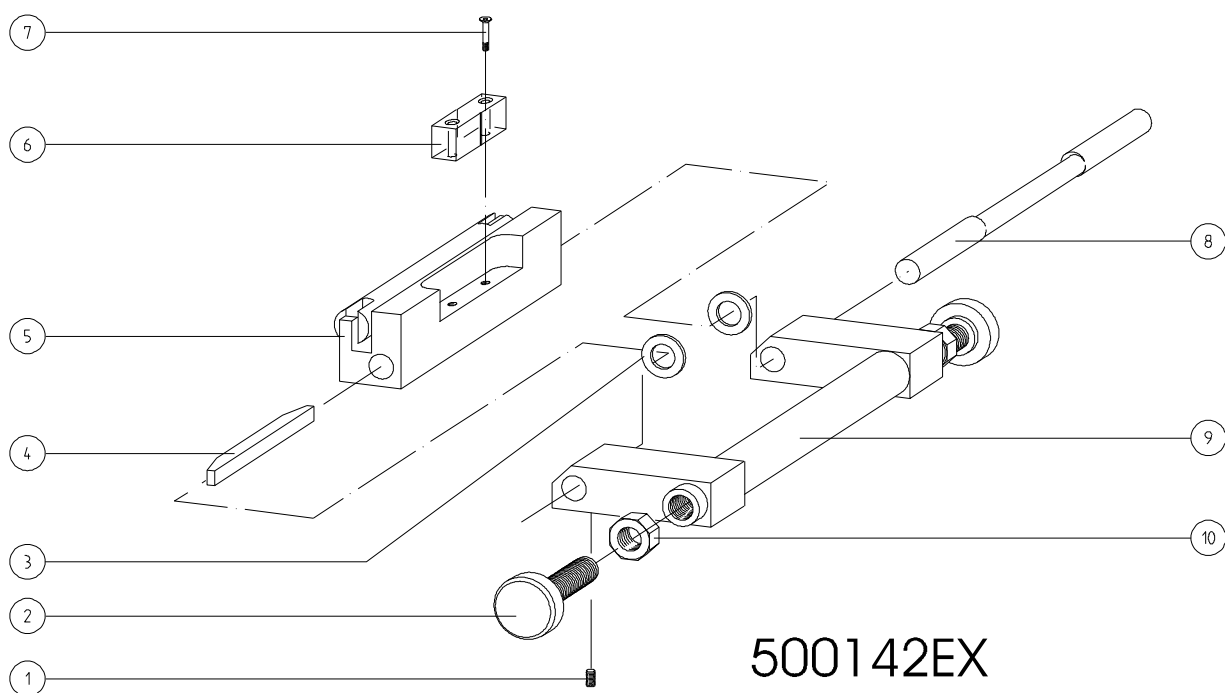
EXPLODED VIEW SLIDEWAY



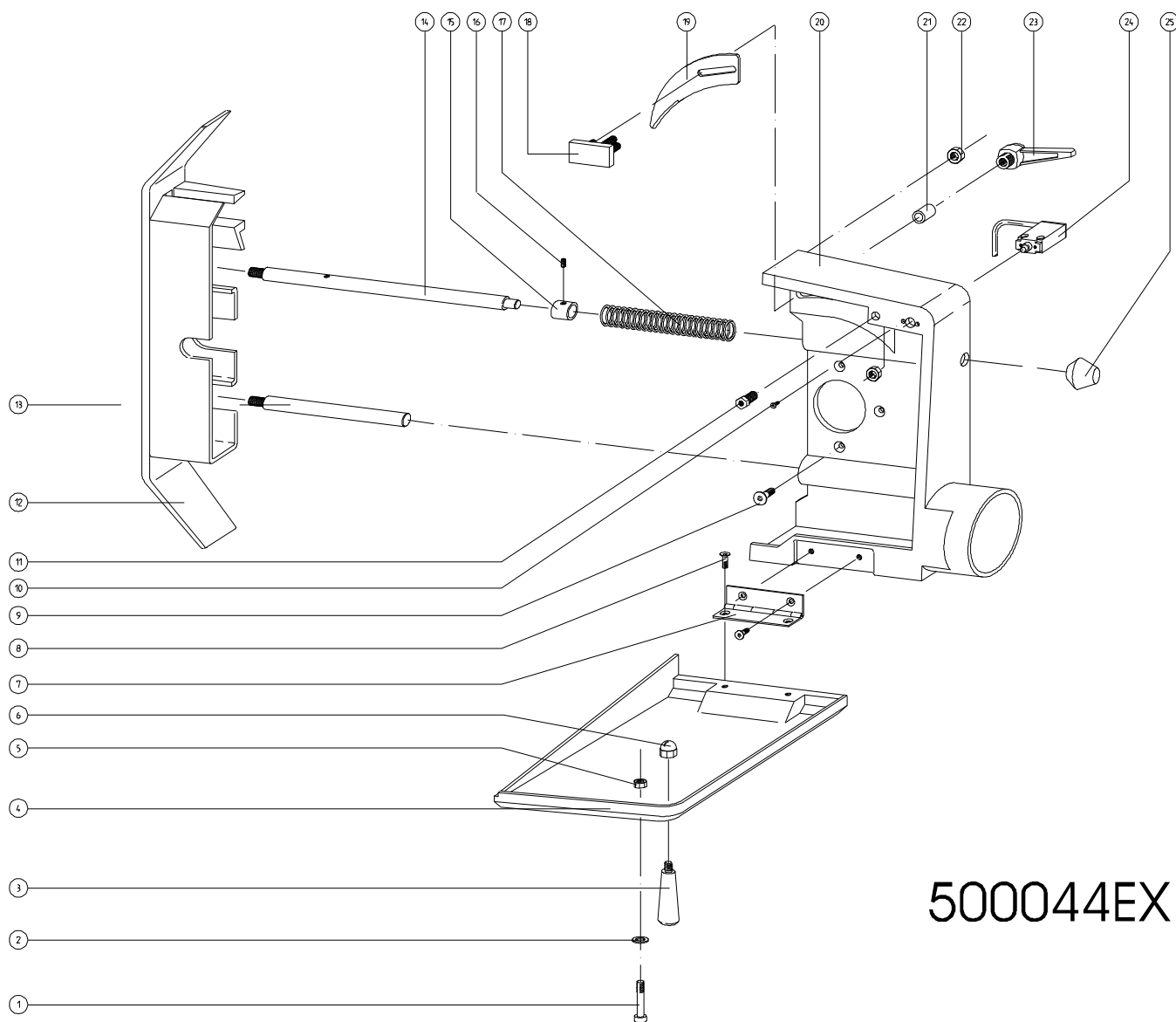
EXPLODED VIEW CARRIAGE



EXPLODED VIEW LENGTH STOP



EXPLODED VIEW SAFETY GUARD



500044EX